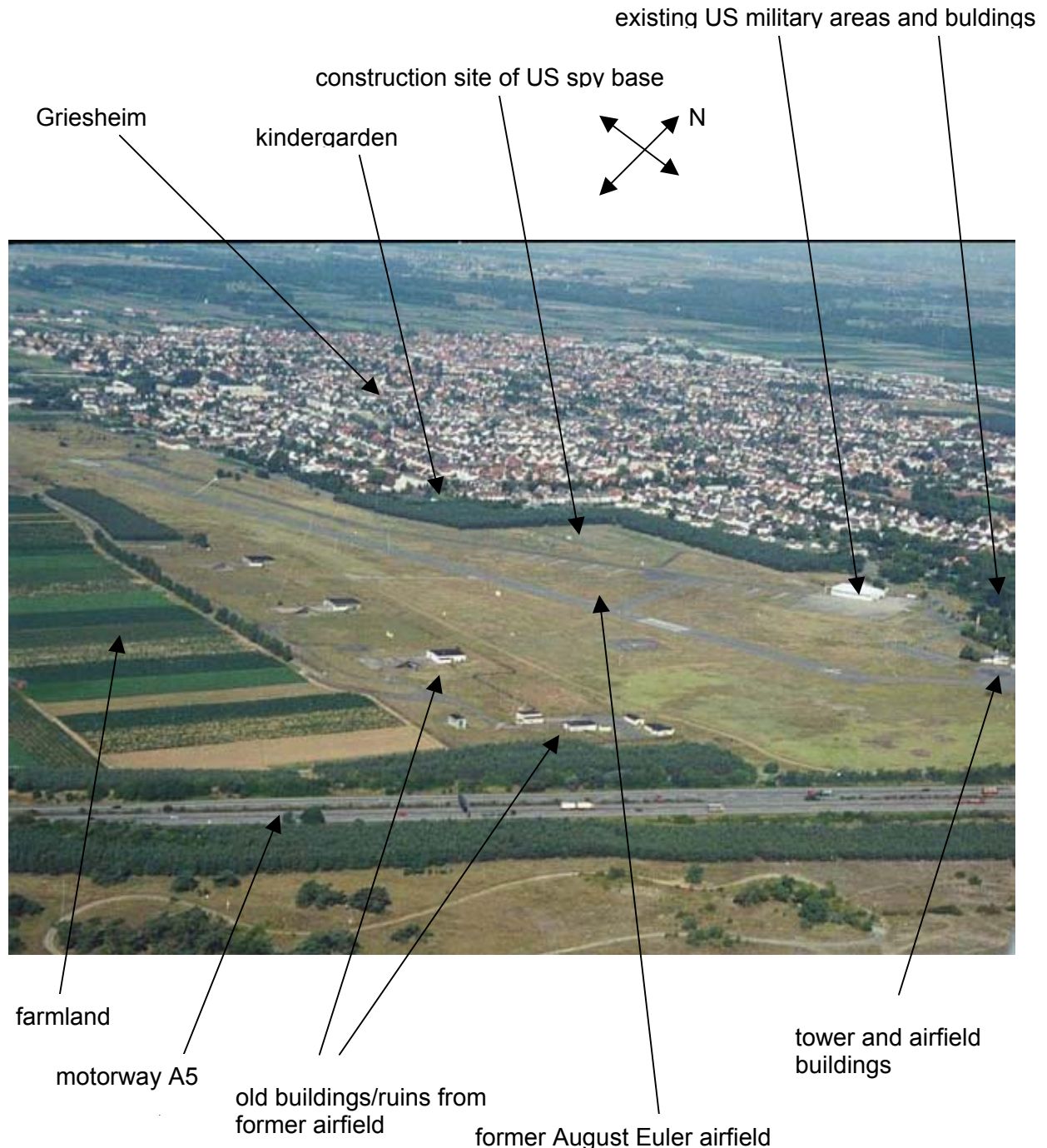


## Site of new US spy base in Darmstadt

(construction started in Dec. 2003; operation is planned for April 2004; photo shows airfield before construction start)

The new US base being built on Darmstadt ground is located on the northern edge of the former August Euler airfield. The housing area shown on this photo belongs to Griesheim, a little town west of Darmstadt. The border between Darmstadt and Griesheim follows the western and northern edge of the airfield.



The former August Euler airfield is located on a (rare) sand area and is under special ecosystem protection. The protected area does not include the new US construction site. The photo is taken from a website of the Darmstadt University of Technology dedicated to the ecosystem restoration project <<http://www.tu-darmstadt.de/fb/bio/bot/geobot/SAMPLING.htm>>.